

ROOFGUTTER

PERFECT FIT

INNOVATIVE INTEGRATED
ROOF – GUTTER SYSTEM



ROOFEUTTER

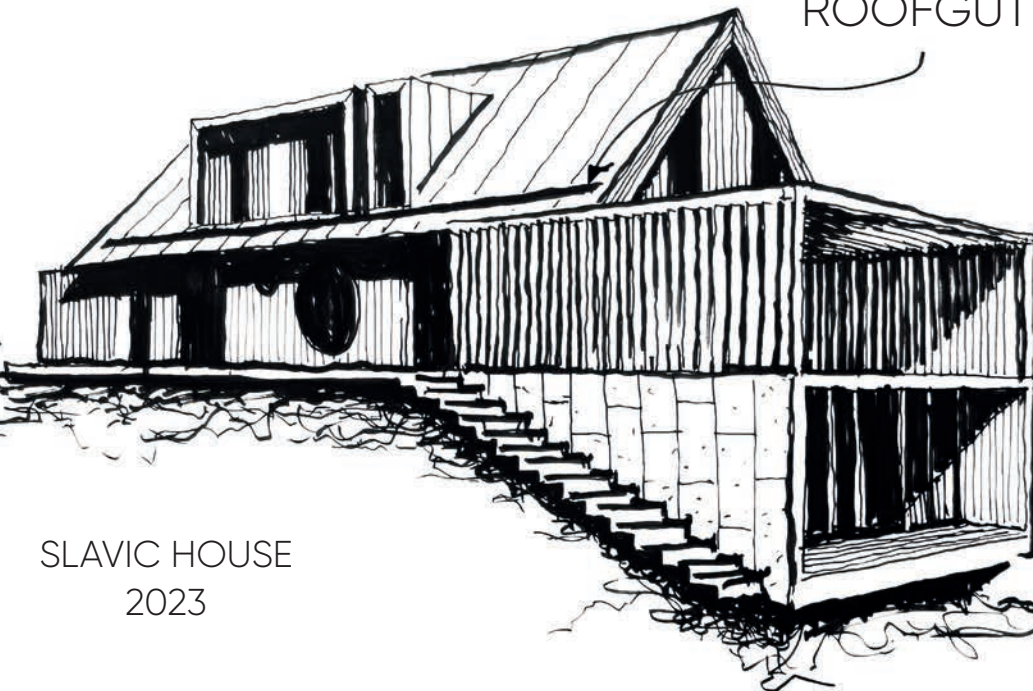
MODERN ROOF ARCHITECTURE

/ 3

Contemporary architecture is minimalist modern barns with a gable roof without eaves, as well as bold innovative house design with visible eaves.. Therefore, after developing the pioneering Galeco HIDDEN gutter system in 2013, we went a step further by creating the first integrated Galeco ROOFGUTTER roof system on the market.

ROOFGUTTER

SLAVIC HOUSE
2023



//

Currently, architects strive for simplicity and technological perfection in their projects. In turn, the construction market, in response to global trends, is developing strongly towards precise solutions that simplify construction processes. We want to create and build the perfect way, but yet simple. These phenomena are increasingly creating contemporary architecture, which is characterized by aesthetics and minimalism.

In this context, ROOFGUTTER is a product ideally suited to the architecture of the future.

Bogusław Barnaś
ARCHITECT

//

WHAT IS ROOFGUTTER?

/ 4

This innovative 2-in-1 roof and gutter system combines roof panels with a gutter system hidden in its structure and the façade of the building. The perfect fit of the roof and gutter allows for a uniform and modern building structure.



ROOF



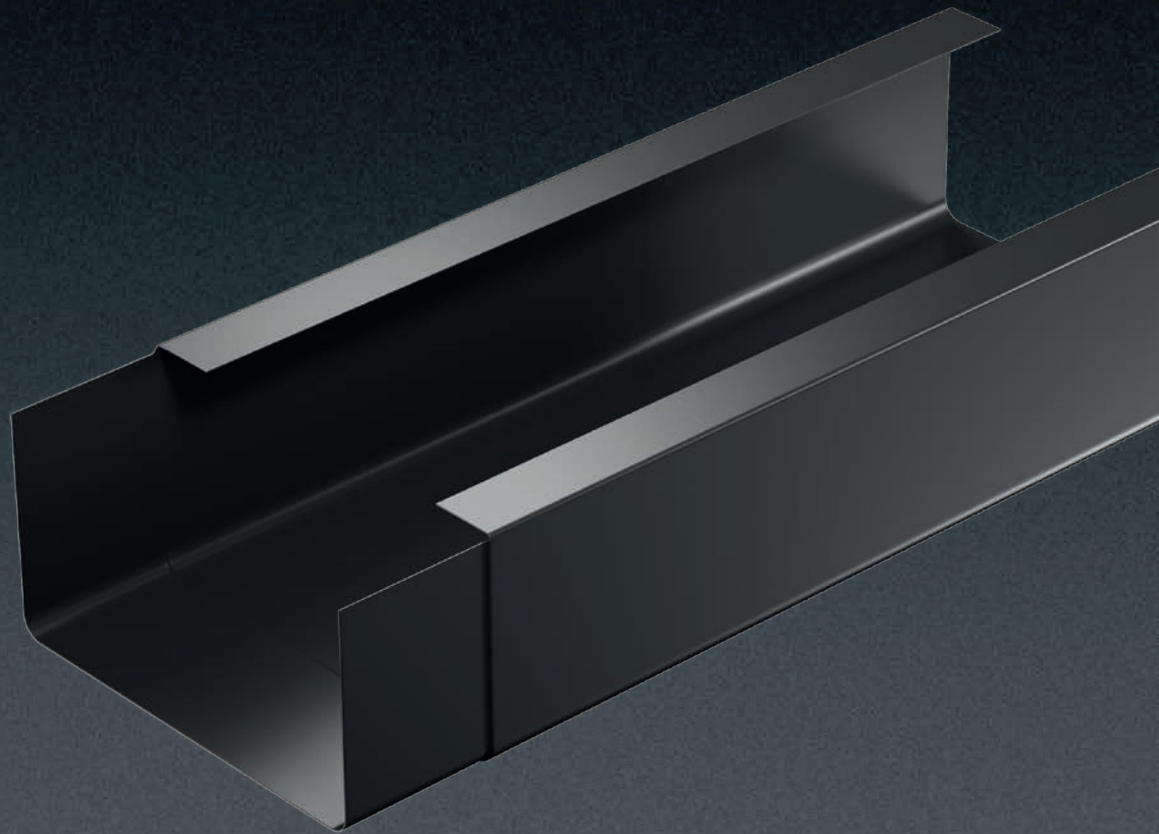
ROOF COVERING

ROOFGUTTER is available in versions with light and heavy roof coverings. We recommend using a light covering in the form of a classic Galeco GRIN standing seam roof panel or its modular version GRIN MOD. Such panels fit perfectly into modern roof architecture. For investors who value heavy roofs, we have introduced the possibility of using a system solution ROOFGUTTER with Koramic V9 covering.

ROOF GUTTER

/ 5

An innovative system of a hidden gutter, which is perfectly integrated into the roof surface while building downpipes in the façade insulation layer. The gutter has been refined in terms of compatibility with the standing seam panel, which is part of the ROOFGUTTER system.



GUTTER

TWO ROOFGUTTER VARIANTS

ROOFGUTTER is intended for pitched gable roofs. It is the only system in the market that is used both in modern barn-style houses with hidden gutters and buildings with traditional eaves extensions.

ROOFGUTTER EAVES

The only hidden gutter solution in the market designed for buildings with traditional eaves extensions. It will fit perfectly into both modern designs and finished homes. Its advantage is its affordable price, resulting from modern technologies and optimisation of production costs.

ROOFGUTTER EAVELESS

A minimalist solution for modern barn-style buildings. The discreet design of the system emphasises the simple design, fitting into the aesthetics of contemporary architectural forms. The clarity of the line and the innovative design give the building a harmonious appearance and functionality

ROOF COVERINGS

/ 8

We have expanded the range of roof coverings that can be used in the ROOFGUTTER system. Choose a lightweight or heavy roof variant that will suit your needs and harmoniously emphasize the architectural concept of the building.

LIGHTWEIGHT ROOF COVERING

Standing seam roofing – modern roof and façade covering Lightweight Galeco GRIN and GRIN MOD coverings were designed by the best experts in the roofing industry and are produced in our factory in Balice near Krakow.

HEAVY ROOF COVERING

For project owners and architects who value modern ceramic solutions, we have added the Koramic V9 roof tiles to our offer of roof coverings compatible with the ROOFGUTTER system. They were designed for Wienerberger by the recognised Studio F. A. Porsche.

The combination of the ceramic tile with the roof gutter creates a product we have called ROOFGUTTER V9.

COMPONENTS

ROOFGUTTER EAVES

ROOF GUTTER SYSTEM



ROOF COVERING

LIGHTWEIGHT ROOF COVERING

1. GALECO GRIN standing seam panel
2. GALECO GRIN MOD standing seam panel

HEAVY ROOF COVERING

3. ceramic roof tile



GALECO PANEL GRIN SOFFIT *



ACCESSORIES *

- heating cables
- snow barriers
- roof communication

ROOFGUTTER EAVELESS

ROOF GUTTER SYSTEM



ROOF COVERING

LIGHTWEIGHT ROOF COVERING

1. GALECO GRIN standing seam panel
2. GALECO GRIN MOD standing seam panel



SUBSTRUCTURE **



ELEVATION MADE OF PANELS GALECO GRIN OR GRIN MOD, OR MADE OF CERAMIC TILE *



ACCESSORIES *

- heating cables
- snow barriers
- roof communication

* optional elements

** dedicated to lightweight roofs – Galeco GRIN or GRIN MOD



WHY ROOFGUTTER EAVES?

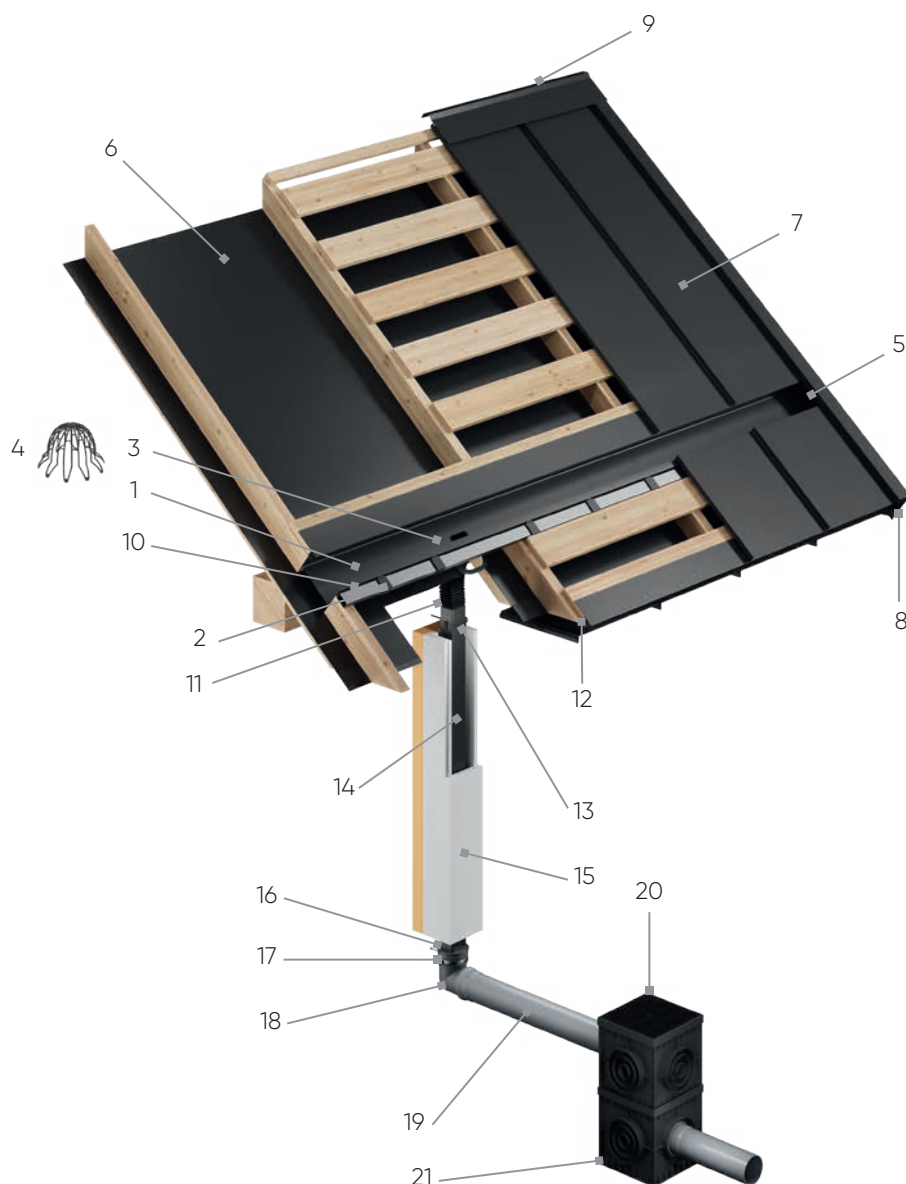
By choosing ROOFGUTTER Eaves, you obtain a minimalist shape of the building. And by getting rid of visible pipes and gutters that can interfere with the facade aesthetics, you receive a 2-in-1 solution that fits perfectly with the requirements of contemporary design and functionality.



LIST OF COMPONENTS

ROOFGUTTER EAVES

WITH LIGHTWEIGHT ROOF COVERING



COMPONENTS

1. Steel roof gutter
2. Gutter bracket
3. Eaves outlet
4. Basket for outlet
5. Universal steel end cap
6. Highly vapour-permeable membrane
7. GRIN/GRIN MOD roof panel or Koramic V9 ceramic tile
8. Wind brace
9. Ridge tile
10. Aluminium profile
11. Flexible elbow

PERFORMANCE TABLE

DOWNPIPE POSITIONING



100 m²



180 m²

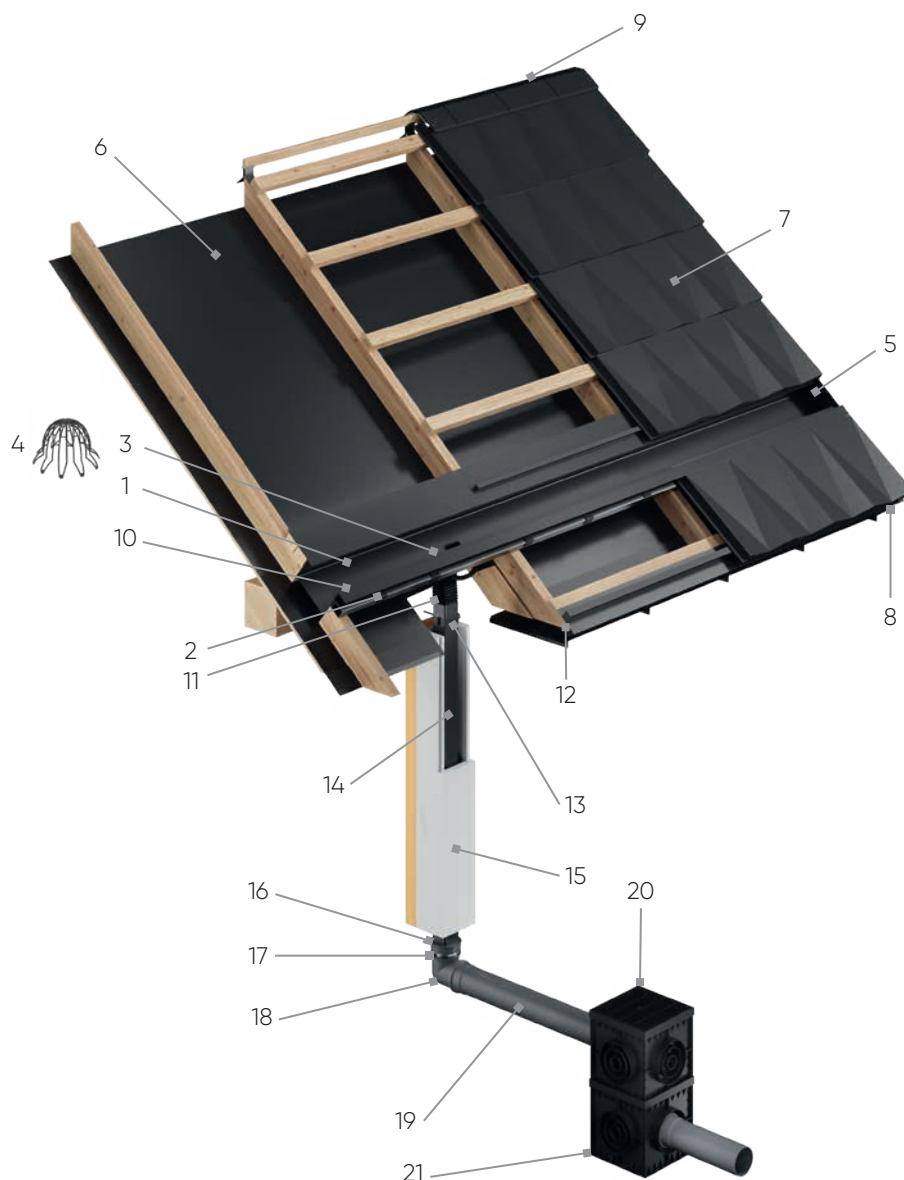
LIST OF COMPONENTS

ROOFGUTTER EAVES

WITH HEAVY ROOF COVERING

COMPONENTS

12. Flashing for the standing seam panel under the eaves
13. 80 x 70 mm clamp
14. 80 x 70 mm PVC pipe
15. Thermal insulation casing for the downpipe
16. 80 x 70 mm/110 mm reduction
17. fi 110 mm clamp
18. fi 110 mm elbow
19. fi 110 mm drain pipe
20. Drain box extension
21. Drain box



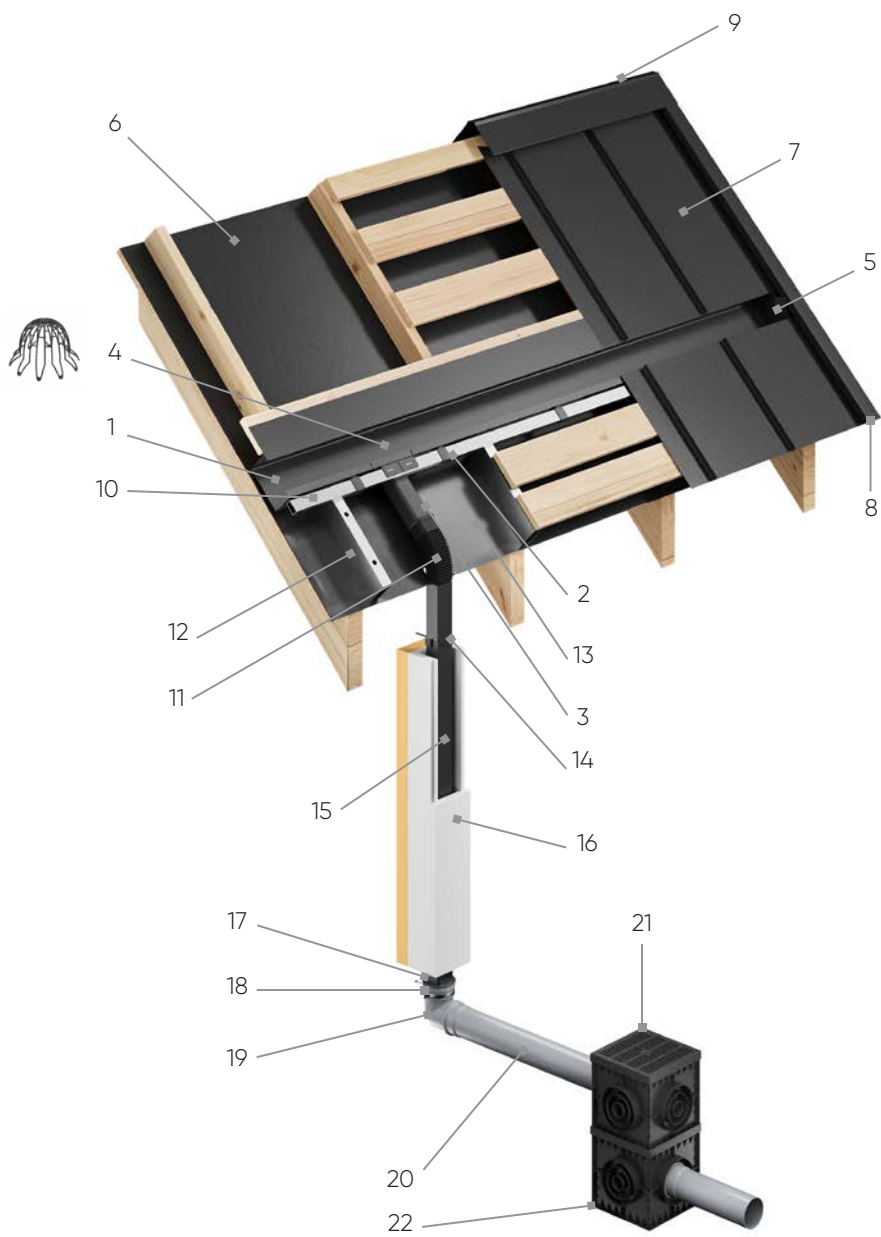
Technical materials, as well as BIM and CAD libraries, are available for download online by scanning the QR code.

WHY ROOFGUTTER EAVELESS?

ROOFGUTTER Eaveless, used in modern barn-style buildings, ensures a uniform transition of the roof into the façade, emphasising the minimalist finish of the entire structure.



LIST OF ELEMENTS ROOFGUTTER EAVELESS



PERFORMANCE TABLE

DOWNPIPE POSITIONING



100 m²



180 m²

1. Steel roof gutter
2. Gutter bracket
3. Eaveless outlet
4. Basket for outlet
5. Universal steel end cap
6. Highly vapour-permeable membrane
7. GRIN/GRIN MOD roof panel
8. Wind brace
9. Ridge tile
10. 25 x 50 mm aluminium profile
11. Flexible elbow
12. 50 x 100 mm aluminium profile
13. PVC membrane
14. 80 x 70 mm clamp
15. 80 x 70 mm PVC pipe
16. Thermal insulation casing for the downpipe
17. 80 x 70 mm/110 mm reduction
18. fi 110 mm clamp
19. fi 110 mm elbow
20. fi 110 mm drain pipe
21. Drain box extension
22. Drain box



Technical materials, as well as BIM and CAD libraries, are available for download online by scanning the QR code.



CHOOSE INNOVATIVE ROOF COVERING

/ 19



LIGHTWEIGHT ROOF COVERING

/ 20

ROOF COVERING

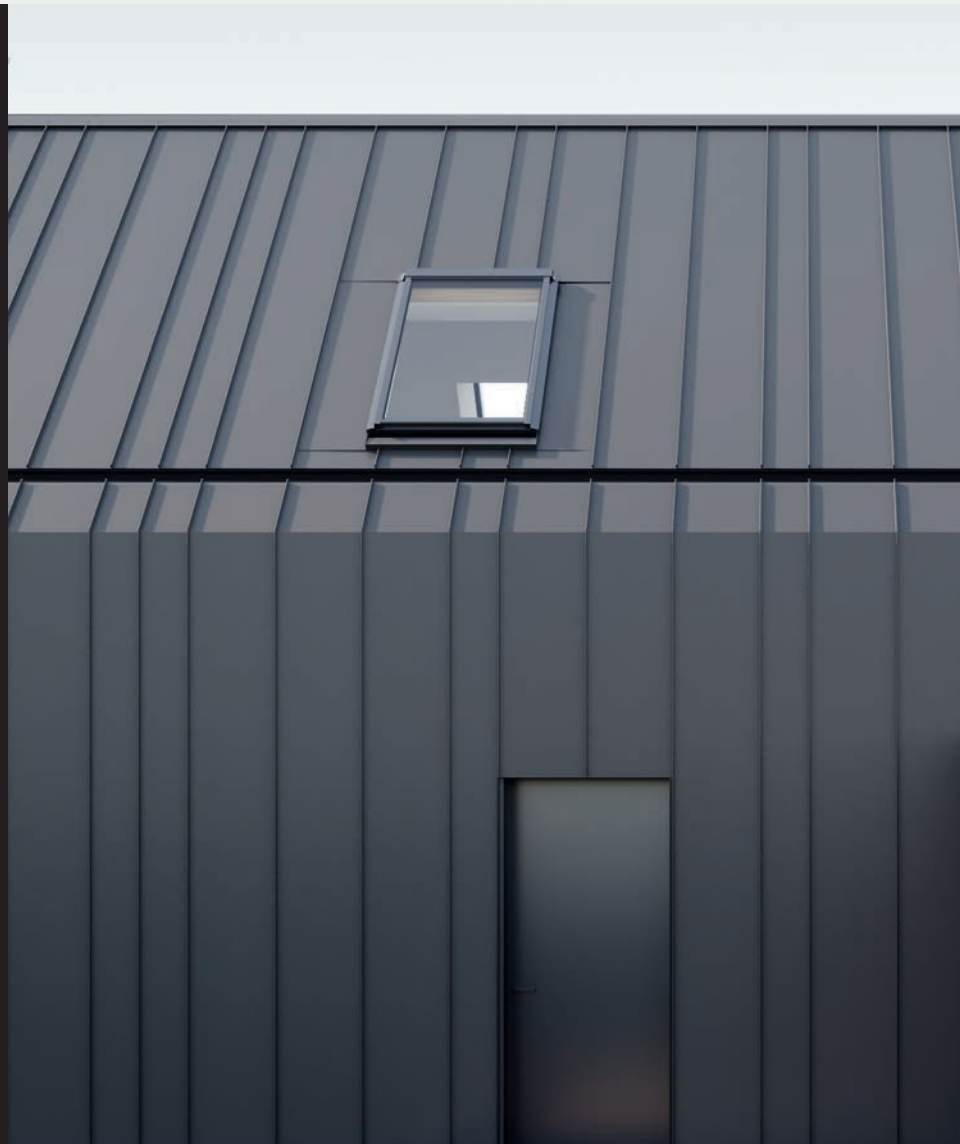
GRIN

GALECO

GALECO GRIN STANDING SEAM PANEL

Galeco GRIN is a standing seam roof panel that fits perfectly into modern architecture. It is characterised by high quality, minimalist design and easy installation.

It is available in two widths as a made-to-measure product. The solution allows for an effective finishing of both the roofing and (as an option) the façade or soffit of the building.



ADVANTAGES



AESTHETICS
AND HARMONY



SAFETY
AND RELIABILITY



HIGHEST QUALITY
RAW MATERIAL



STRENGTH AND
NO RIPPLE EFFECT



EASY AND QUICK "SNAP-IN"
INSTALLATION



CARING FOR
THE ENVIRONMENT

smooth



10 mm slim
micro wave



double
trapezoid

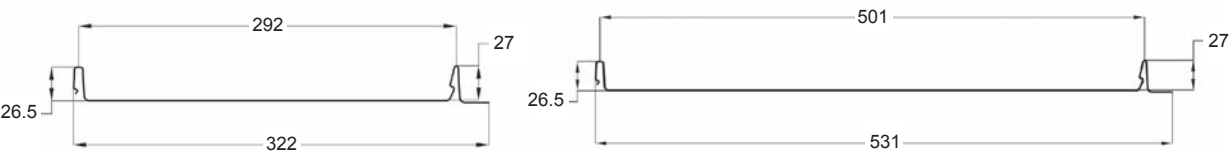


18 mm wide
micro wave







double
reinforcement

PANEL WIDTHS



COLOURS AND WARRANTY

TYPE OF COATING	WARRANTY*	GRAPHITE RAL 7016	BLACK RAL 9005
GREENCOAT® PURAL BT MAT	50 years	 716M	 905M
ROUGH MATT POLYESTER	40 years	 716R	 905R

* Warranty period granted by SSAB, GREENCOAT(R) PURAL BT MAT and ROUGH MATT POLYESTER coated steel manufacturer, other terms&conditions apply.

LIGHTWEIGHT ROOF COVERING

/ 22

ROOF COVERING

GRIN_{MOD}
GALECO

GALECO GRIN MOD STANDING SEAM PANEL MODULAR

Galeco GRIN MOD is a standing seam roof panel in a modular version that combines the advantages of classic Galeco GRIN roof sheets covering with modern functionality of modular solutions.

Thanks to the modular design, these panels are available off-the-shelf, which significantly simplifies and speeds up the assembly process. They are also characterised by exceptional durability, which makes them an ideal choice for a variety of architectural projects, providing them with a unique visual effect.



ADVANTAGES



SAFETY
AND TIGHTNESS



CONVENIENT TRANSPORT
AND STORAGE



LOW
WEIGHT



EASY "SNAP-IN"
INSTALLATION



AVAILABILITY
„IMMEDIATELY“



CARING FOR
THE ENVIRONMENT

smooth

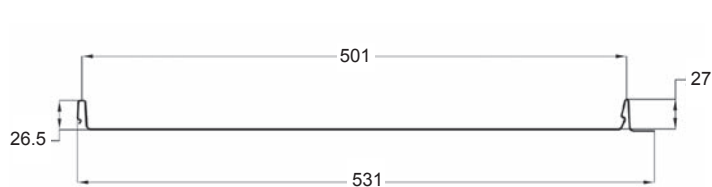


starter roof panel







roof panel standard

PANEL WIDTH



COLOURS AND WARRANTY

TYPE OF COATING	WARRANTY*	GRAPHITE RAL 7016	BLACK RAL 9005
GREENCOAT® PURAL BT MAT	50 years	 716M	 905M
ROUGH MATT POLYESTER	40 years	 716R	 905R

* Warranty period granted by SSAB, GREENCOAT(R) PURAL BT MAT and ROUGH MATT POLYESTER coated steel manufacturer, other terms&conditions apply.

ROOF

GALECO GRIN STANDING SEAM PANEL

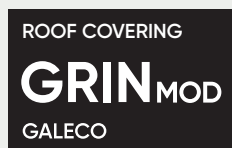
Effective panel widths	292 mm or 501 mm
Panel total widths	322 mm or 531 mm
Panel length	0,35 – 8 m*
Seam height	28 mm
Metal sheet thickness:	0,5 mm
Zinc coating:	275 g/m ²
Minimum slope angle	9°

* The panel is made-to-measure in the given length ranges.

GUTTER

ROOF GUTTER

Pipe size	80x70 mm, length: 4000 mm
Gutter cross-section	190 mm, length: 4000 mm



ROOF GUTTER GALECO GRIN MOD

TECHNICAL PARAMETERS

ROOF

GALECO GRIN MOD STANDING SEAM PANEL MODULAR

Effective panel widths	501 mm
Panel widths	531 mm
Effective lengths modular started panels	1 i 2 m
Effective lengths modular standard panels	1 i 2 m
Metal sheet thickness:	0,5 mm
Standard zinc coating:	275 g/m ²
Minimum slope angle	18°

GUTTER

ROOF GUTTER

Pipe size	80x70 mm, length: 4000 mm
Gutter cross-section	190 mm, length: 4000 mm

ROOFGUTTER V9

with  wienerberger

CERAMIC TILE

By combining the expertise of Galeco and Wienerberger, a renowned manufacturer of heavy coatings, we have created a unique solution.

ROOFGUTTER V9 is a harmonious combination of the Galeco roof gutter with the elegant Koramic V9 ceramic roof tile.



ADVENTAGES



MODERN
PATENTED SHAPE



SUSTAINABILITY AND CARE
FOR THE ENVIRONMENT



AESTHETICS
AND FUNCTIONALITY



TOP
QUALITY

SHAPE

/ 27



Koramic V9 was designed for Wienerberger by Studio F. A. Porsche. The "V" shape on the tile not only attracts the eye, but also plays an important structural role. The V9 stands out for its efficiency, durability and minimalism, which subtly emphasises the play of light and harmoniously blends in with the aesthetics of the building.

COLOURS

ANTHRACITE MAT
ANGOBA

BLACK SATIN
ANGOBA

KORAMIC V9



ROOFGUTTER V9

with  wienerberger

ROOFGUTTER
KORAMIC V9

TECHNICAL PARAMETERS

KORAMIC V9

Minimal demand	8,9 psc/m ²
Ridge tile demand	3 psc/rm
Length of coverage	40,2 – 41,8 cm
Average length of coverage	41,0 cm
Width of coverage	26,9 cm
Dimensions	48,7 x 31,0 cm
Approximate weight of the tile	4,1 kg
Quantity per pallet	240 psc
Quantity per package	5 psc
Minimum slope angle*	16°

* When using a roof membrane

ROOF GUTTER

Pipe size	80x70 mm, length: 4000 mm
Gutter cross-section	190 mm, length: 4000 mm

BENEFITS FOR THE INVESTOR



SYSTEM BASED

A unique solution in the form of a 2-in-1 system integrating the roof and the gutter facilitates the process of selecting individual components by the investor.



SAFETY AND PEACE OF MIND

15-year system guarantee as well as individual technical guaranties: 50 years for the standing seam panel, 40 years for aluminium substructure, 35 years for the steel gutter level, 15 years for PVC downpipes.



CARE FOR THE ENVIRONMENT INTEGRATED SERVICE

Scandinavian GreenCoat® Pural BT steel as the input material for the standing seam panel contains a biotechnology-based coating made of Swedish rapeseed oil instead of petroleum-derived ingredients.

BENEFITS FOR THE ROOFER



AIR CIRCULATION SAFETY

The system does not interfere with the ventilation of the roof covering. Ventilation of the roof surface can be easier than in the case of fascia board systems.



GASKETLESS CONNECTION

The proven Qnnect solution used in the gutter system ensures a durable and tight connection of elements using a dedicated assembly adhesive.



DOUBLE WATERPROOFING LAYER

Double protection against leakage thanks to an additional layer of waterproofing placed under the gutter level.

BENEFITS FOR THE ARCHITECT



AESTHETICS

An innovative system solution that allows you to hide the gutter in the roof slope and in the façade insulation layer. The gutter is completely invisible to the eye, which guarantees a uniform and minimalist finish of the building.



INNOVATIVENESS

The system can be used not only in projects without eaves, but also those with eaves, which is a unique solution of the hidden gutter for this type of buildings.



DESIGN MATERIALS

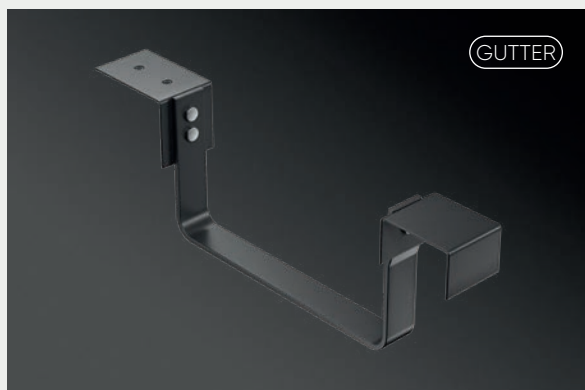
Full availability of design tools in the form of BIM and CAD libraries that enable the product to be implemented in an architectural design.

KNOWLEDGE AND EXPERIENCE

/ 30

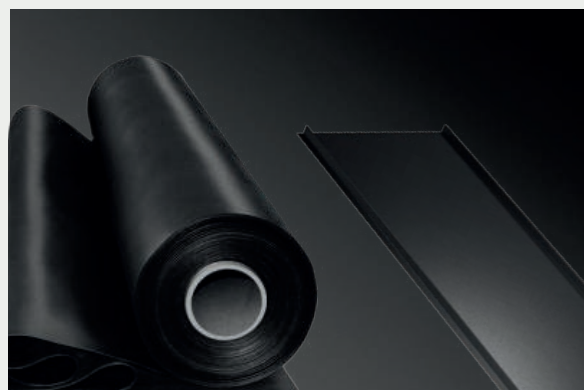
30 years of experience in the production of gutter systems and 12 years of presence on the market of the pioneering Galeco HIDDEN gutter system. These two elements have resulted in expert and technological expertise, thanks to which we have developed the most advanced rainwater drainage system currently available on the market. Since our priority is security, we took care of its maximization using proprietary solutions.

CARE FOR SAFETY



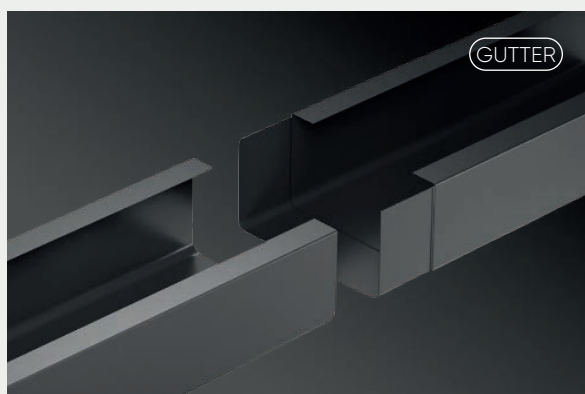
BRACKET

For the sake of maximum safety, a bracket was used at the point of joining the gutters. It has two support points, which makes it more durable than standard gutter hooks. The use of the bracket eliminates the problem of the gutter level dropping, and thus unsealing the system.



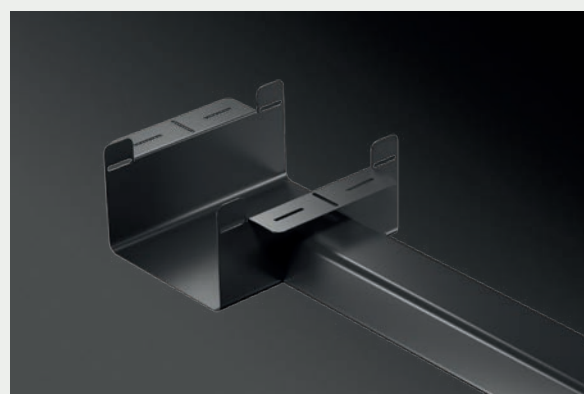
DOUBLE LAYER OF ROOFING MATERIAL

In buildings without eaves, we ensured double protection of the usable area by using a second layer of roofing in the form of a waterproofing membrane under the panel covering. The membrane is installed on the roof slope between the section of the gutter system and the end of the eaves. This solution guarantees the safety of the building in a strategic location of the entire system.



QNNECT

In the gutter system, fasteners and seals have been eliminated using the proven Qnnect solution, which ensures a durable and tight connection of elements using a dedicated assembly adhesive.



OUTLET

Designing a dedicated integrated outlet made it possible to eliminate the muff where the drain connects to the pipe. This solution combats the risk of unsealing of these two elements above the living space of the building without eaves.

RAW MATERIAL

GUTTER

GREENCOAT®
COLORFUL STEEL

The gutter system combines two types of materials to ensure the highest quality and durability of the system while optimizing costs. The gutter level is made of the highest quality Scandinavian steel GreenCoat® RWS Pural, which provides excellent resistance to corrosion and weather conditions, as well as durability of gloss and colour. The GreenCoat® RWS Pural meets the current REACH requirements and is completely chromate free. The downpipe is made of PVC, which guarantees high durability for many years.

SUBSTRUCTURE

The standing seam panels on the main roof slope are mounted on a wooden substructure with solid or openwork boarding. Panels mounted on the roof slope under the gutter are mounted on a substructure connecting wood and aluminium.

ROOF

GREENCOAT®
COLORFUL STEEL

The standing seam panel is made of GreenCoat® Pural BT steel in a mat version. It contains a biotechnology-based coating that uses Swedish rapeseed oil instead of petroleum-derived ingredients, which is unique in terms of environmental considerations on the market. The GreenCoat® Pural BT guarantees a high level of durability, maintaining its aesthetic appearance and resistance to corrosion. The matt coating ensures the highest degree of colour repeatability. The GreenCoat® Pural BT is REACH compliant and chromate free.

THE ROOFGUTTER CREATORS

Galeco is a leader in its industry, specialising in the design and production of gutter and roof systems. It is a Polish family company present on the market since 1996. For years, it has been introducing pioneering solutions that have become market hits.

/ 34

//

The philosophy of innovation and the search for innovative solutions has been a key pillar of Galeco's business strategy since the company was founded.

Vision, passion, and a focus on success, combined with ethics and respect for employees and customers are the attributes of our brand. ROOFGUTTER is a product that confirms Galeco's DNA. We do not wait to see what others will show, we create trends in the industry ourselves, using the knowledge and experience of our team.

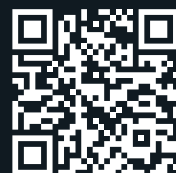
//

BOARD PRESIDENT & OWNER

Szczepan Buryło



ROOFEGUTTER



WWW.DACHRYNNA.GALECO.PL/EN/